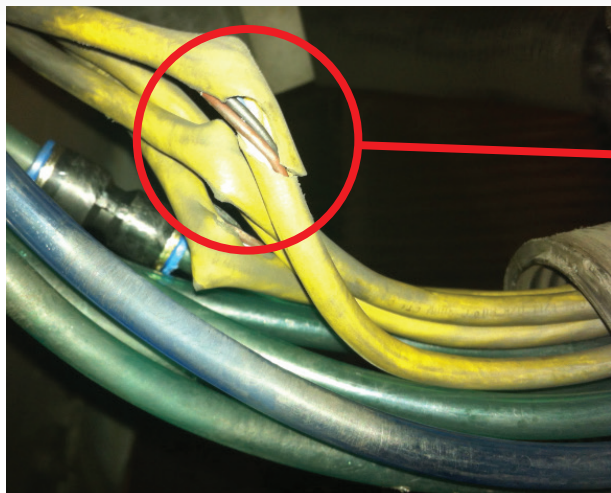




Drossbach

CABLE SAVER™

www.reikuna.com 1-800-841-5804



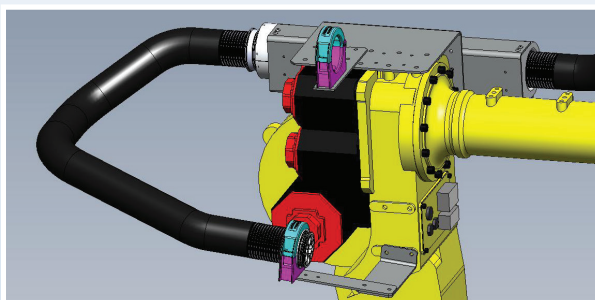
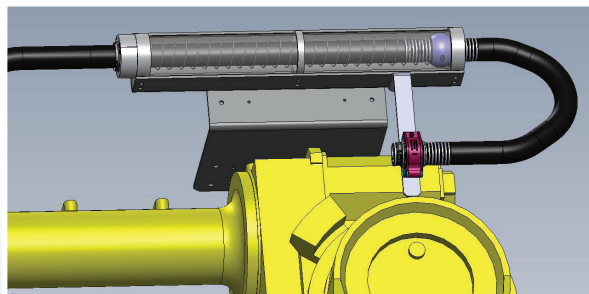
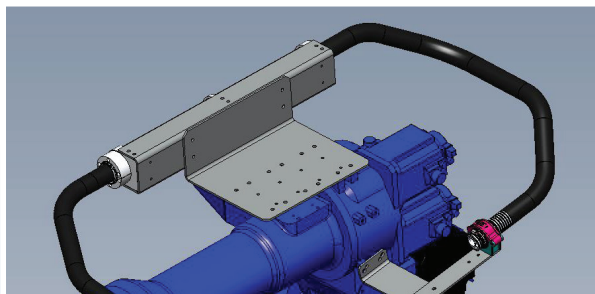
***Cable failures and
Robotic downtime***

Patented NEW Technology

Compatible with all makes and models of Robots



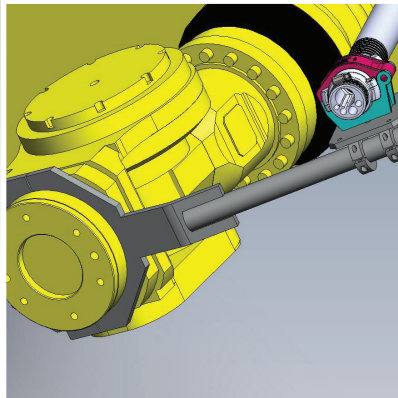
The spring retraction system inside The Energy Tube™ keeps cables and hoses stored in a safe area when not required.



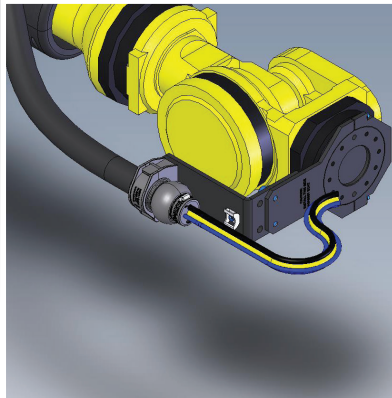
- COMPLETE solution for any make or model of Robot
- Available in three sizes 36, 52 and 70 mm
- Universal mounting hardware included
- Installs quickly on either side of the Robot
- Check out the video at www.reikuna.com

3 Different End of Arm Tool options:

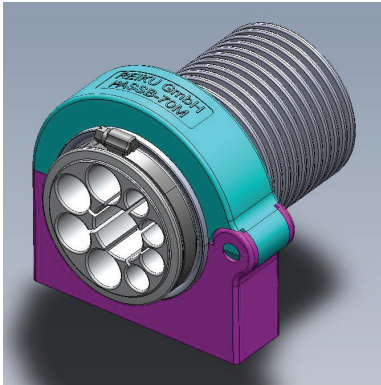
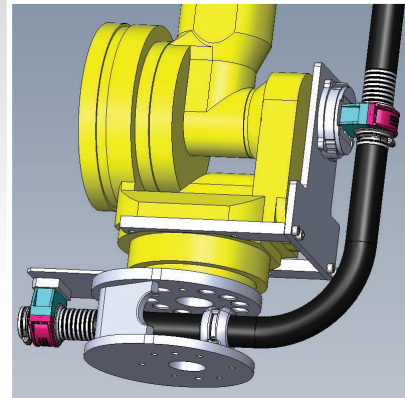
Round Handled
Frying-Pan



Flat Handled
Frying-Pan

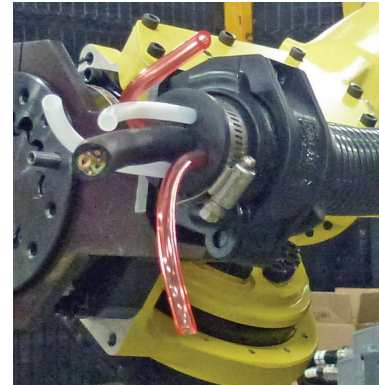


"Cow's Mouth"™



Custom cablestars are prepared based on the actual cable and hose outside dimensions of your Robot.

Cablestars hold the cables and hoses firmly in place eliminating the push-pull forces from the connector ends.



Turn this into THIS!!

