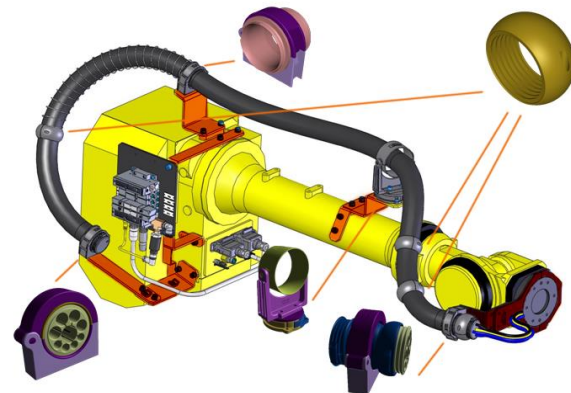


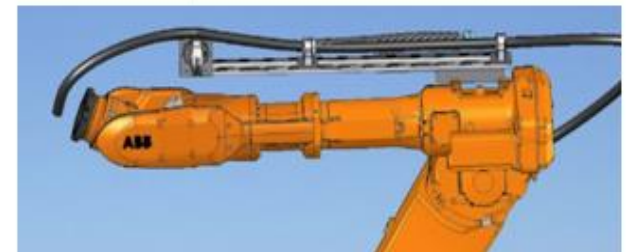
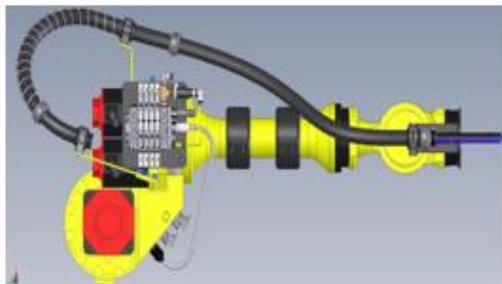


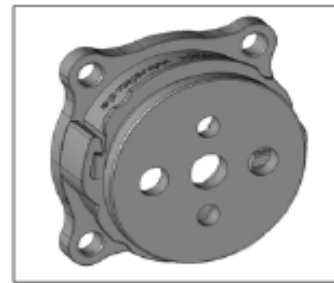
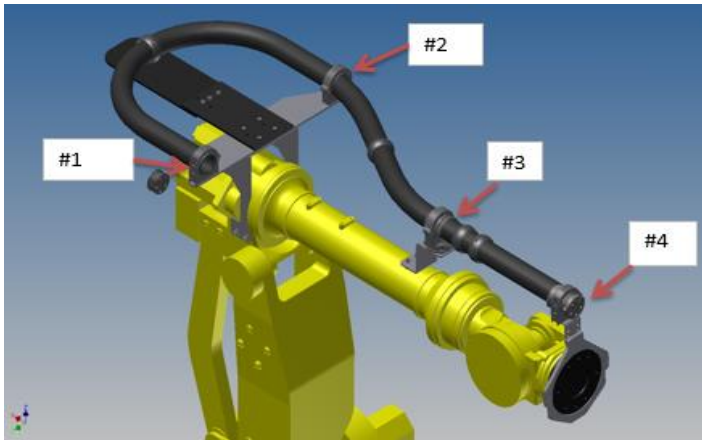
Assembly Area #	Reiku Part #	Part Description	Qty Req'd. Per Robot	Unit of Measurement	Std Pack Qty	23mm I.D. sized Axis 3 to EOAT dressout
1 & 4	PASSB-29K	Conduit Gripping Clamp	2	PC	25	
1 & 4	PAMBB-23F/G	Inner Combi Middle Jaw Set	2	PC	25	
1 & 4	TKKSB-23	Custom Cablestar/grommett	2	PC	1	
2	PAPRB-29F/G	Conduit Protector with screws	1	PC	25	
2 & 3	POFHB-36/36	Spring Holder	2	PC	10	
2	DFST-36NEW	Spring	1	PC	1	
2 & 3	PASSB-36S	Conduit Gripping Clamp	2	PC	10	
3	PADFB-42	Rotary Base Flange (Lazy Susan)	1	PC	10	
2 and 4	PAPRB-23 F/G	Conduit Protector with screws	3	PC	25	
1 to 4	PARAB-23G	15 million cycle Robotics Conduit	5	MT	50	

REIKU Conduit Available in Minimum 5m Lengths

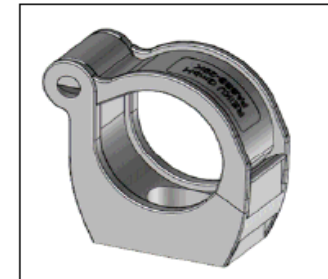
*No mounting hardware is included in this BOM contact a specialist for pricing

* Pictures below are meant to be visual representations of options for potentially installing REIKU Cable Management components.

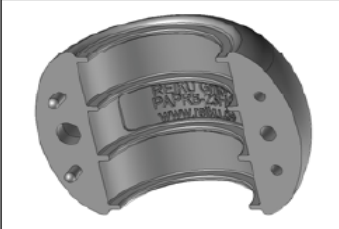




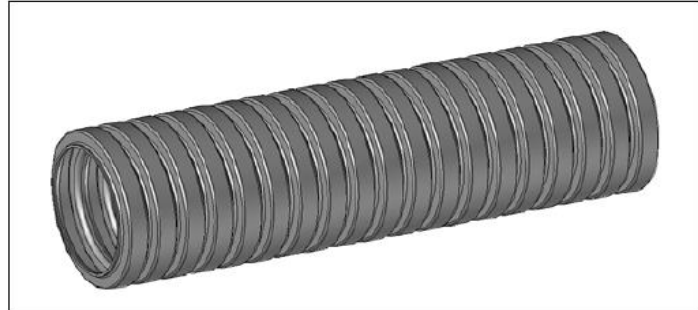
Drehflansch
Rotary Base
 NW42: **PADFB-42**



Spannschelle Kunststoffverschluss
Gripping Clamp plastic closure
 NW29: **PASSB-29K**



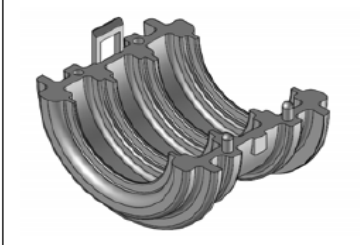
Hälfte des Protektors
Half of Protector
 NW23: **PAPRB-23F/G**



Wellrohr NW23G *Conduit NW23G*



Hälfte des Federhalters
Half of Spring Holder
 NW36: **POFHB-36/36**



Hälfte der Mittelbacke
Half of Middle Jaw
 NW23: **PAMBB-23F/G**



Spannschelle NW36
Gripping Clamp NW36
 NW36: **PASSB-36S**