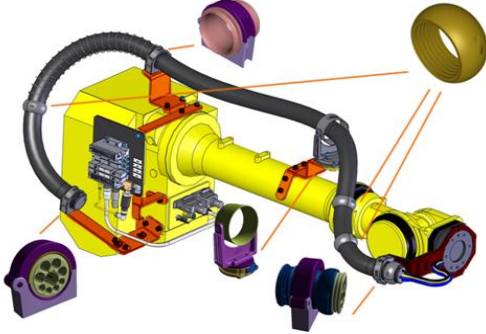


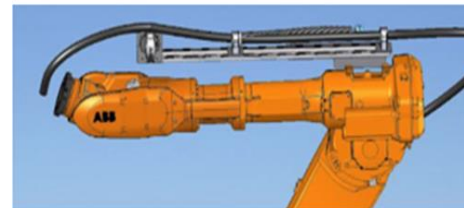
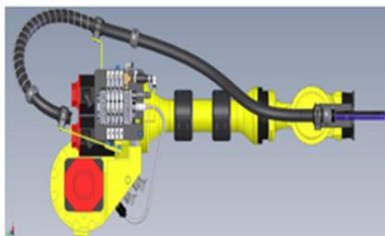


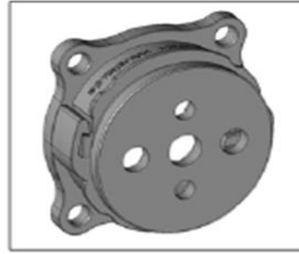
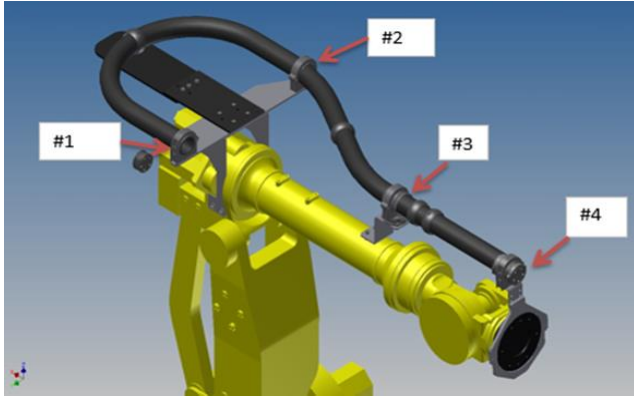
Assembly Area #	Reiku Part #	Part Description	Qty Req'd. Per Robot	Unit of Measurement	Std Pack Qty	29mm I.D. sized Axis 3 to EOAT dressout
1	PASSB-29K	Conduit Gripping Clamp	1	PC	25	
1	PAMBB-29F/G	Inner Combi Middle Jaw Set	1	PC	25	
1 & 4	TKKSB-29	Custom Cablestar/grommett	2	PC	10	
2	PAPRB-29F/G	Conduit Protector with screws	1	PC	25	
2 & 3	POFHB-36/36	Spring Holder	2	PC	10	
2	DFST-36NEW	Spring	1	PC	10	
2, 3 & 4	PASSB-36S	Conduit Gripping Clamp	3	PC	10	
3	PADFB-42	Rotary Base Flange (Lazy Susan)	1	PC	10	
3 To 4	PAPRB-29 F/G	Conduit Protector with screws	2	PC	25	
4	PAKPB-29	Ball Joint Protector	1	PC	25	
1 to 4	PARAB-29G	15 million cycle Robotics Conduit	5	MT	50	

REIKU Conduit Available in Minimum 5m Lengths

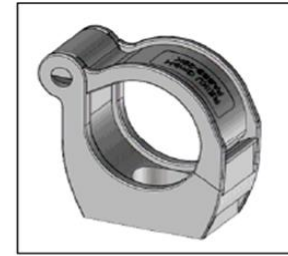
*No mounting hardware is included in this BOM contact a specialist for pricing

* Pictures below are meant to be visual representations of options for potentially installing REIKU Cable Management components.

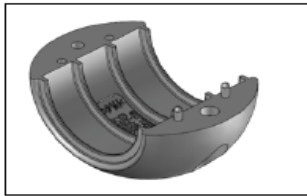




Drehflansch
Rotary Base
 NW42: **PADFB-42**



Spannschelle Kunststoffverschluss
Gripping Clamp plastic closure
 NW29: **PASSB-29K**



Hälfte des Protektors
Half of Protector
 NW29: **PAPRB-29F/G**



Wellrohr NW29G Conduit NW29G



Hälfte des Federhalters
Half of Spring Holder
 NW36: **POFHB-36/36**

