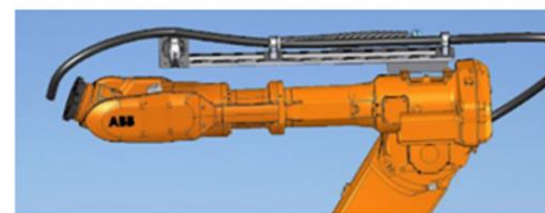
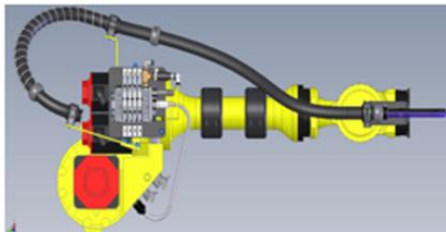


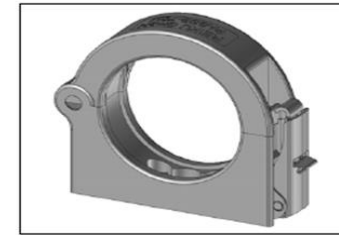
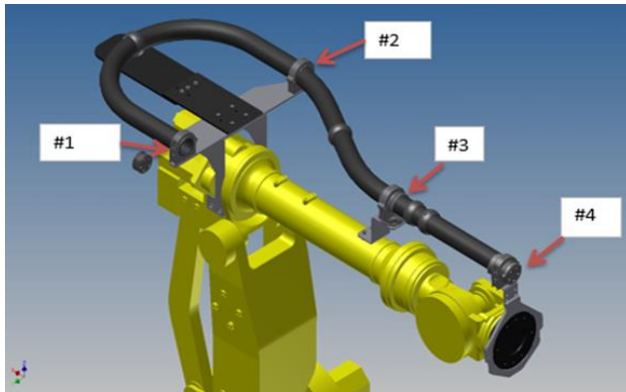
Assembly Area #	Reiku Part #	Part Description	Qty Req'd. Per Robot	Unit of Measurement	Std Pack Qty	70mm I.D. sized Axis 3 to EOAT dressout
1, 2 & 4	PASSB-70M	Conduit Gripping Clamp	3	PC	10	
1	PAKMB-70	Inner Combi Middle Jaw Set	1	PC	10	
1 & 4	TKKSB-70	Custom Cablestar/grommett	2	PC	10	
2	PAPRB-70	Conduit Protector with screws	1	PC	10	
2	PAFHB-70	Spring Holder	1	PC	10	
2	DFST-237695	Spring	1	PC	10	
3	PADGB-70	Rotary Fork	1	PC	10	
3	PATBB-70	Trumpet Jaw	1	PC	10	
3	PADFB-70	Rotary Base Flange (Lazy Susan)	1	PC	10	
4	PAVGB-70	Connection Joint	1	PC	10	
4	PADPB-70	Rotary Single Rib Conduit Protector	2	PC	10	
1 to 4	PARAB-70G	15 million cycle Robotics Conduit	5	MT	30	

REIKU Conduit Available in Minimum 5m Lengths

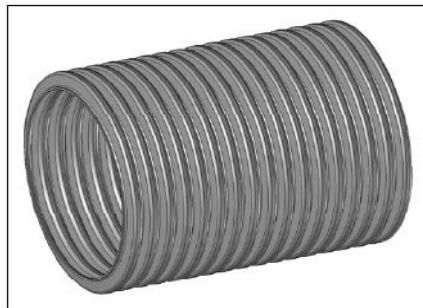
*No mounting hardware is included in this BOM contact a specialist for pricing

* Pictures below are meant to be visual representations of options for potentially installing REIKU Cable Management components.

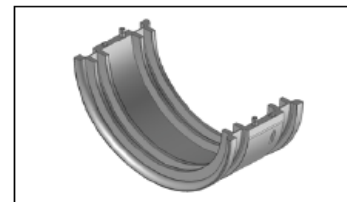




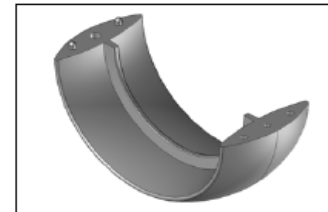
Spannschelle Metallverschluss
Gripping Clamp metal closure
NW70: **PASSB-70M**



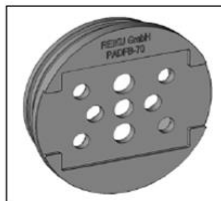
Wellrohr NW70G Conduit NW70G



Hälfte der Kombimittelbacke
Half of Combi-Middle Jaw
NW70: **PAKMB-70**



Hälfte des Dreh-Protektors
Half of Rotary Protector
NW70: **PADPB-70**



Drehflansch NW70
Rotary Base NW70
NW70: **PADFB-70**

