



REIKU Collaborative Robot Kit Installation Suggestions

- Video instructions are available in the video library section of www.reikuna.com
- Directly access instructions on YouTube at:
<https://www.youtube.com/playlist?list=PL1kBbUiDvwl1eAcNxQxM7-zZfXwDO31B>

Installation suggestions for REIKU Cobot Cable Management Kit equipped with VELCRO Strap (LSDFB) version



Step 1- Secure the PASSB Style Gripping Clamp (with the screw provided) to the mounting hole in the centre of the LSDFB “turntable”.



Step 2- Place the Gripping Clamp / LSDFB strap assembly against the Cobot arm in the general vicinity that the cables and hoses are to be routed.



Step 3- Loop the end of the Velcro strap through the slotted opening in the rear of the LSDFB and pull forward until all the slack in the strap has been removed and then wrap around the Cobot arm.



Step 4- Once the Gripping Clamp / LSDFB are securely held in place against the Cobot arm engage the Velcro surfaces to lock the assembly in place.



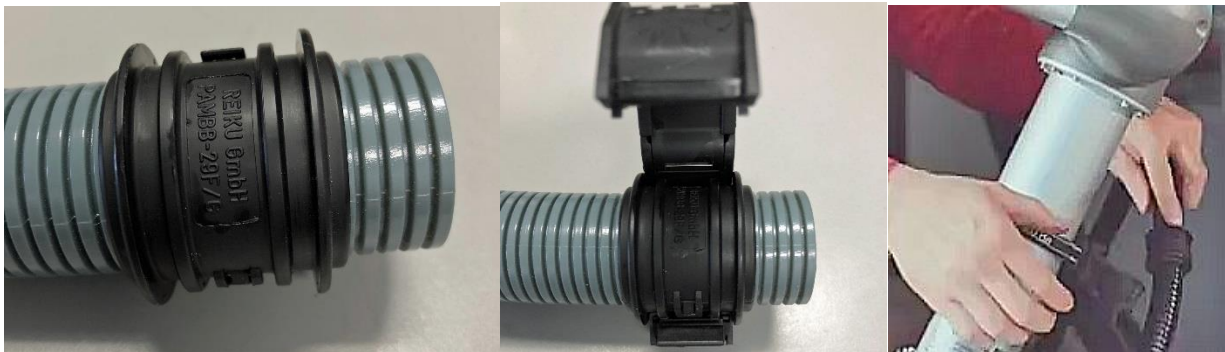
Step 5- Repeat this process and install the second Gripping Clamp / LSDFB assembly.



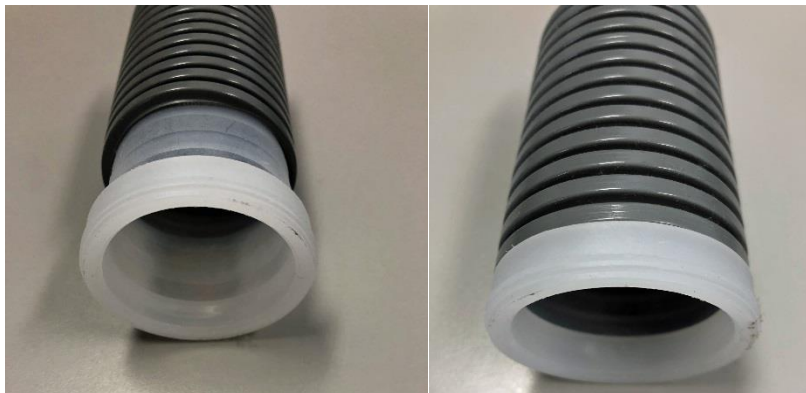


**An additional third clamp assembly can be added to the upper Cobot arm for heavier conduit loads or for applications that involve high dynamics.*

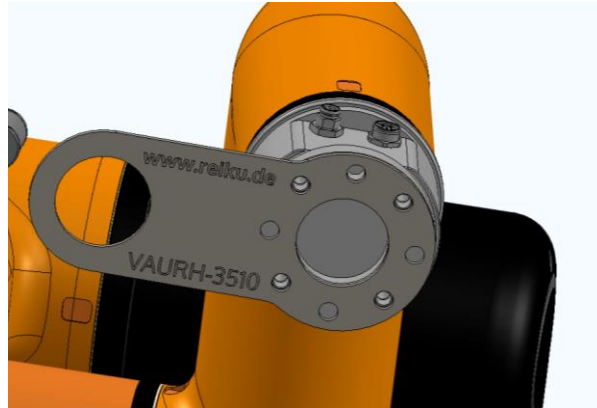
Step 6- Install / snap the two halves of the Middle Jaw set together onto the conduit in the area where you wish the Gripping Clamp to hold the conduit on the Cobot. Position the Middle Jaw into the groove inside the Gripping Clamp and then close the Gripping Clamp. The conduit will now rotate in a radial direction inside of the Gripping Clamp to release any torsion load.



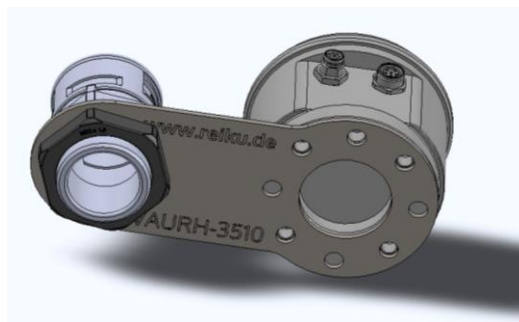
Step 7- Insert the supplied PEDST Sealing Caps into the conduit end which is at the base of the Cobot as this will create a smooth radius edge.



Step 8- Attach the REIKU “Frying Pan” bracket to the Cobot faceplate.



Step 9- Insert the REIKU conduit connector into the hole in the “Frying Pan” with the threads facing away from the Cobot and secure with the supplied locknut.



Step 10- Insert the REIKU conduit into the connector and install cables and hoses.



FANUC CRX Kit Information

